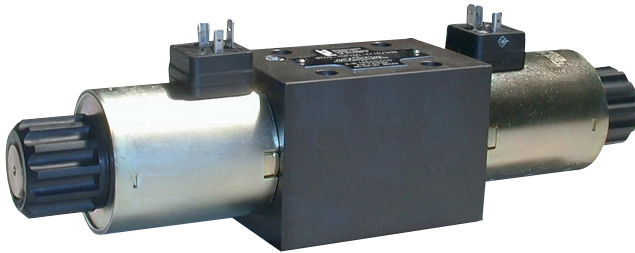


4/2, 4/3 Way Valve NG 10 ISO 4401

electrically operated, directly controlled



- Directly controlled piston valve
- High switching capacity
- Saving energy by low flow resistance
- Pressure sealed oil-immersed solenoids for direct and alternating current
- Easy service: Solenoid can be changed without leakage while the valve is under system pressure; no tools are required
- Solenoids can be rotated 3x90°, allowing alternative connector positions
- Port connection pattern according to ISO 4401

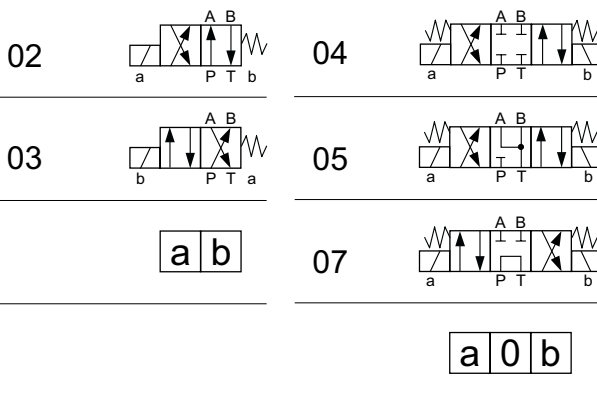
Specifications according to VDI 3267

General

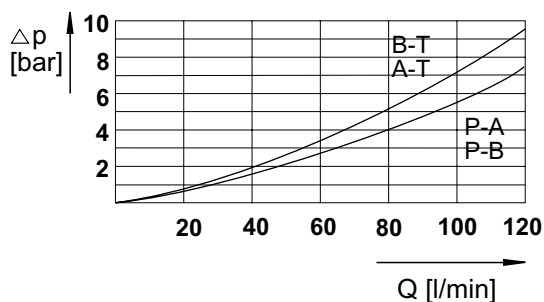
Flow path	see diagrams
Type of valve	piston valve
Mounting method	4x M6x40 DIN912
Connection of port	mounting plate
Mounting positions	mountable in any position
Ambient temperature °C	-25 to +50
Mass valve kg	6,6
Mass mounting plate kg	1,2

Hydraulic

Operating pressure range		
Ports P, A, B bar	315	
Port T bar	100	
Hydraulic oil temperature °C	-10 to +70	
Viscosity range mm ² /s	20 to 400	
Maximal rate of flow l/min	120	
Operation	electrical	
	24V DC	230V, 50Hz AC
Switching time on ms	90	160
Switching time off ms	70	100
Power consumption P20 W	23	
Making capacity P20 VA		50
Duty factor %	100	100
Protection system DIN 40050	IP65	IP65



Characteristic curve
for hydraulic oil 35 mm²/s, 50°C



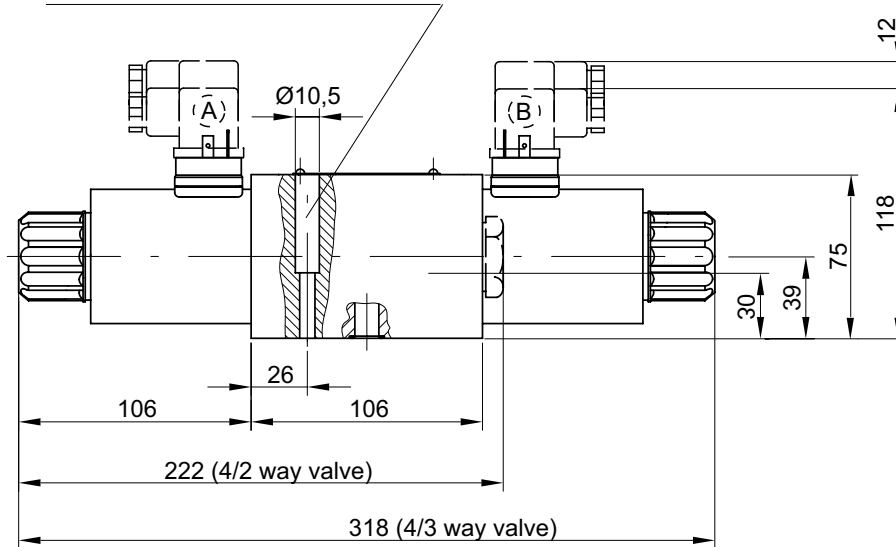
Options:

- Alternative voltage
- Alternative configurations
- Alternative connectors

The specifications given herein are subject to alteration

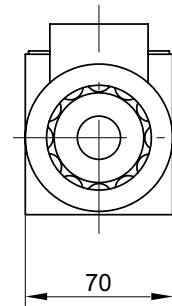
Way Valve NG 10 ISO 4401

4xM6x40 DIN912/M=15Nm
not included



Fastening screws
order number:
4 x Id.-Nr. 800-307

Plug not included,
order number:
Id.-Nr. 806-002



Electrical connector
seal
order number:
Id.-Nr. 80162-004

Type code

Id.-Nr. (specified
by the factory)
Directional control
valve
Electrically controlled
Configuration number
Nominal size
Mounting

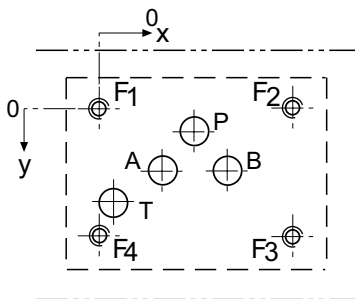
W e 0 2 - 1 0 P 1 0 0 E 0 2 4 / 0 H N

Manual emergency operation
Electric interface
H= connector DIN 43650
Power supply / Voltage
024/0= 24V DC
220/5= 230V/50Hz
Solenoid type
E= single solenoid
Design code

Port connection pattern

NG 10 ISO 4401

The figure shows the side of the mounting
plate to which the valve is fastened

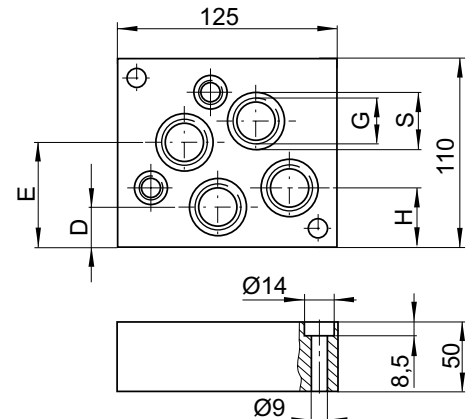
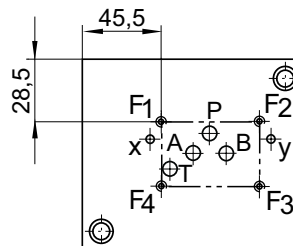


	P	A	T	B	F1	F2	F3	F4
Ømax	Ø11,2	Ø11,2	Ø11,2	Ø11,2	M6	M6	M6	M6
x	27	16,7	3,2	37,3	0	54	54	0
y	6,3	21,4	32,5	21,4	0	0	46	46

Single-unit mounting plate

Order number:
PW10-G3-400
PW10-G4-400
PW10-G5-400

	G	S	D	E	H	M
R 3/8"	Ø23	30	55	41,5	67	
R 1/2"	Ø27	26	59	37,5	71	
R 3/4"	Ø33	24	61	35,5	73	



Multiple-unit mounting plates
can be supplied on request

The specifications given herein are subject to alteration