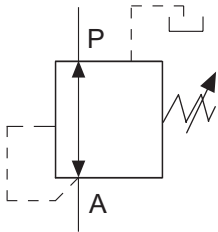


Pressure-Reduction Valve cartridge, directly controlled

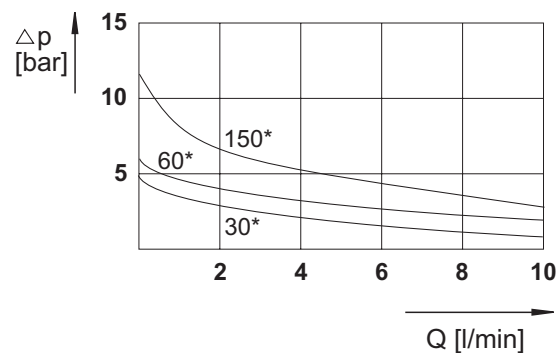
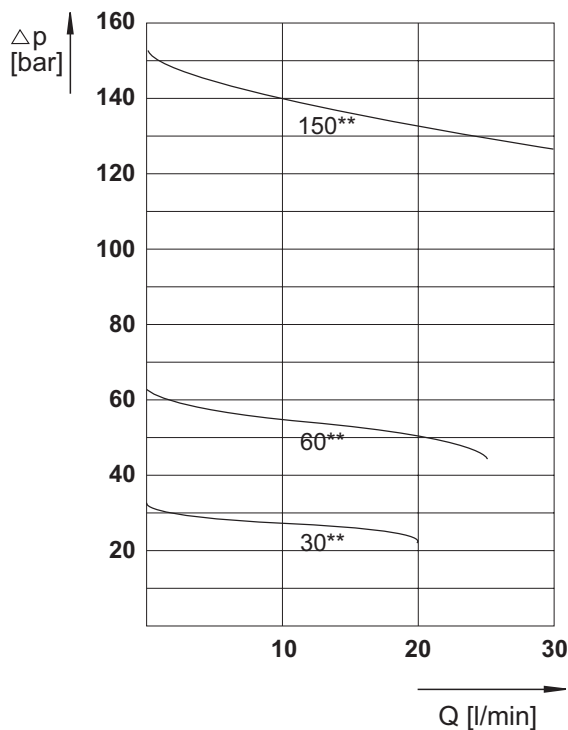


- Damped piston valve
- Small hysteresis
- Several pressure steps
- Different adjustment method

Specifications according to VDI 3276

General	
Flow path	see diagrams
Type of valve	piston valve
Mounting method	M24x1,5
Connection of port	location hole
Mounting position	mountable in any position
Ambient temperature	°C -5 to +50
Mass valve	kg 0,4
Mass mounting plate	kg
Hydraulic	
Operating pressure	
Ports A, B	bar 3-30, 5-60, 10-150 or 20-250
Hydraulic oil temperature	°C -5 to +70
Viscosity range	mm ² /s 10-300
Operating flow range	l/min see characteristic curve

Characteristic curve for hydraulic oil 35 mm²/s, 50°C



* = Min. adjustable pressure
** = Max. adjustable pressure

Specifications given herein are subject to alteration

