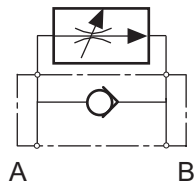


Check Valve NG 6 of flow control valve



- By-pass of the flow valve in opposite direction
- Good flow rate
- Sandwich plate valve

Specifications according to VDI 3268

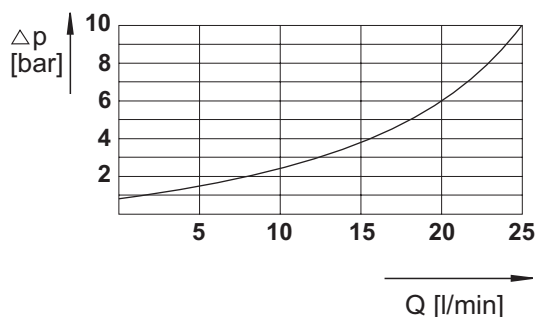
General

Flow path	see diagram
Type of valve	seat valve
Mounting method	hole size 2xØ5,4
Connections of port	mounting plate
Mounting position	mountable in any position
Ambient temperature °C	-5 to +50
Mass valve kg	0,5
Mass mounting plate kg	1,0

Hydraulic

Operating pressure range	
Ports A, B bar	150
Hydraulic oil temperature °C	-5 to +80
Viscosity range mm ² /s	10-300
Max. rate of flow l/min	see characteristic curve

Characteristic curve for hydraulic oil 35 mm²/s, 50°C



Specifications given herein are subject to alteration

