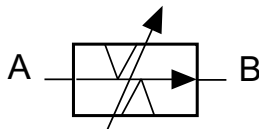


# Flow Control Valve NG 6 ISO 4401

Controlled by rotary knob



Symbol



- Min. rate of flow: 10 cm<sup>3</sup>/min
- Reproducibility even with low flow rates
- Fluid flow can be controlled nearly independently of pressure and viscosity
- Control range of up to 3 rotations
- Sensitive adjustment

### Specifications according to VDI 3267

#### General

Flow path	see diagrams
Type of valve	gap-type throttle valve
Mounting method	bore size 2x 5,5
Connection of ports	mounting plate
Mounting position	mountable in any position
Ambient Temperature °C	-5 bis +50
Mass of valve kg	0,8
Mass of mounting platte kg	1,0

#### Hydraulic

Operation pressure range	150
Ports A, B bar	-10 bis +70
Hydraulic oil temperature °C	10 bis 300
Viscosity range mm <sup>2</sup> /s	9
max. rate of flow l/min	rotary control knob
Operation	330°
Angle of rotation	1050°
3 rotations	

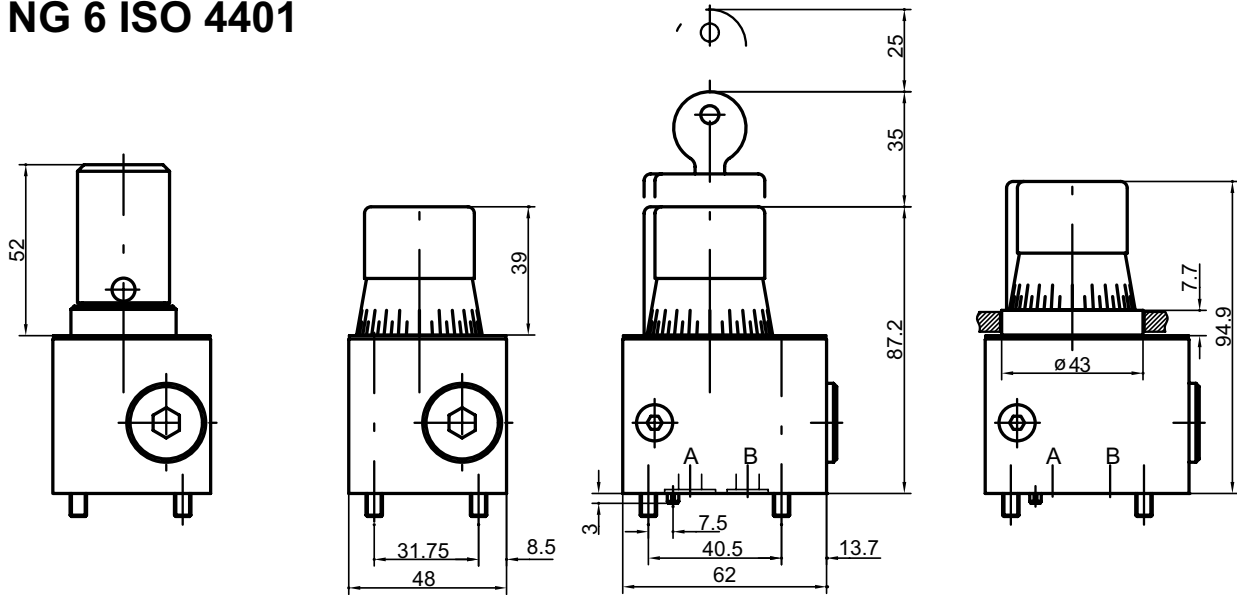
Rate of flow Qmin-Qmax(cm <sup>3</sup> /min)	Flow range	Rot. 1	Rot. 2	Rot. 3
10- 100	0.1	x		
10- 200	0.2	x		
10- 400	0.4	x		
25- 500	0.5	x		
25- 700	0.7	x		
50- 1500	1.5	x	x	
100- 3000	3.0	x		
150- 6000	6.0	x	x	
20- 8000	8.0		x	x
20- 1200	1.2		x	x
20- 3000	3.0		x	
20- 6000	6.0			x
20- 9000	9.0		x	

#### Options:

- Lockable
- Front-panel mounting
- Protective cover

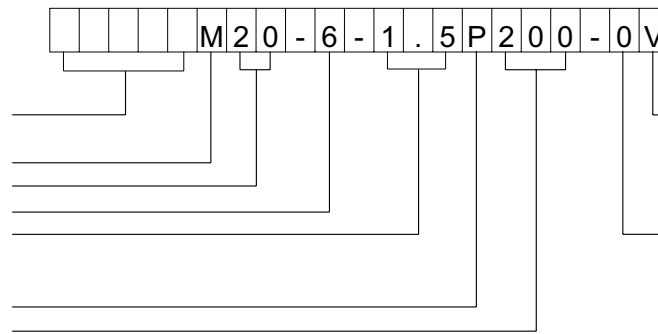
The specifications given herein are subject to alteration

# Flow Control Valve NG 6 ISO 4401



## Type code

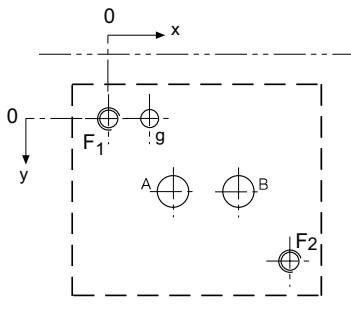
Ident.-Nr. (specified by the manufacturer)  
Flow valve  
Configuration number  
Nominal size  
Flow range (for design "P" pre-set value)  
Mounting  
Design code



Type of control  
V= rotary knob and lock(E10)  
D= rotary knob  
K= cover (fixed setting)  
P= cover with lead seal  
Number of rotations  
0= 1 rot., no front-panel mount.  
1= 1 rot., front-panel mounting  
2= 2 rot., front-panel mounting  
3= 3 rot., front-panel mounting

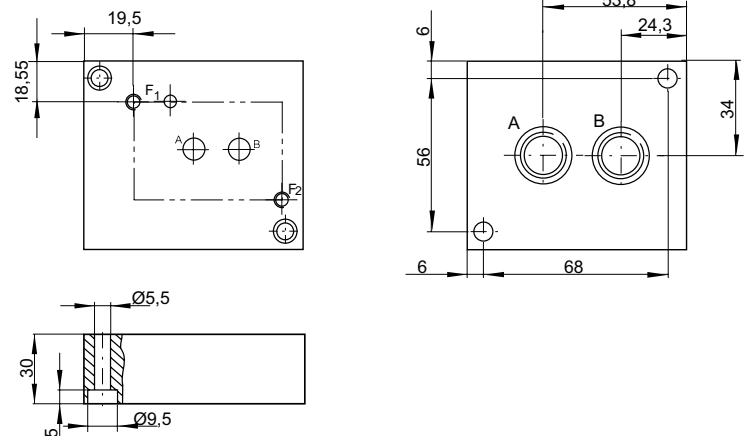
## Port connection pattern

Nominal size NG6 ISO 4401  
The figure shows the side of the mounting plate to which the valve is fastened.



## Single-unit mounting plate

order number:  
PM6-G1-400 R 1/8"  
PM6-G2-400 R 1/4"  
PM6-G3-400 R 3/8"



	A	B	g	F1	F2
$\varnothing_{max}$	$\varnothing 7$	$\varnothing 7$	$\varnothing 3.5$	M5	M5
x	12,7	30,2	7,5	0	40,5
y	15,5	15,5	0	0	31,75

Multiple-unit mounting plates can be supplied on request

The specifications given herein are subject to alteration