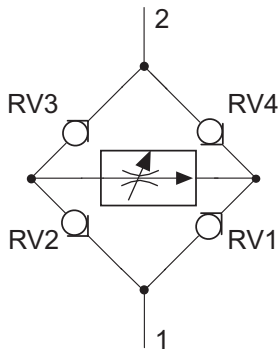


Rectifer NG 6 of flow control valve



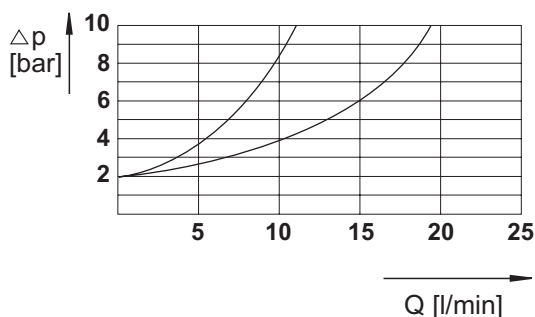
- Flow control in supply and return of the utiliser
- Same speed of utiliser in both directions
- Sandwich plate valve

Specifications according to VDI 3268

General	
Flow path	see diagrams
Type of valve	seat valve
Mounting method	hole size 2xØ5,4
Connection of ports	mounting plate
Mounting position	mountable in any position
Ambient temperature	°C -5 bis +50
Mass valve	kg 0,6
Mass mounting plate	kg 1,0

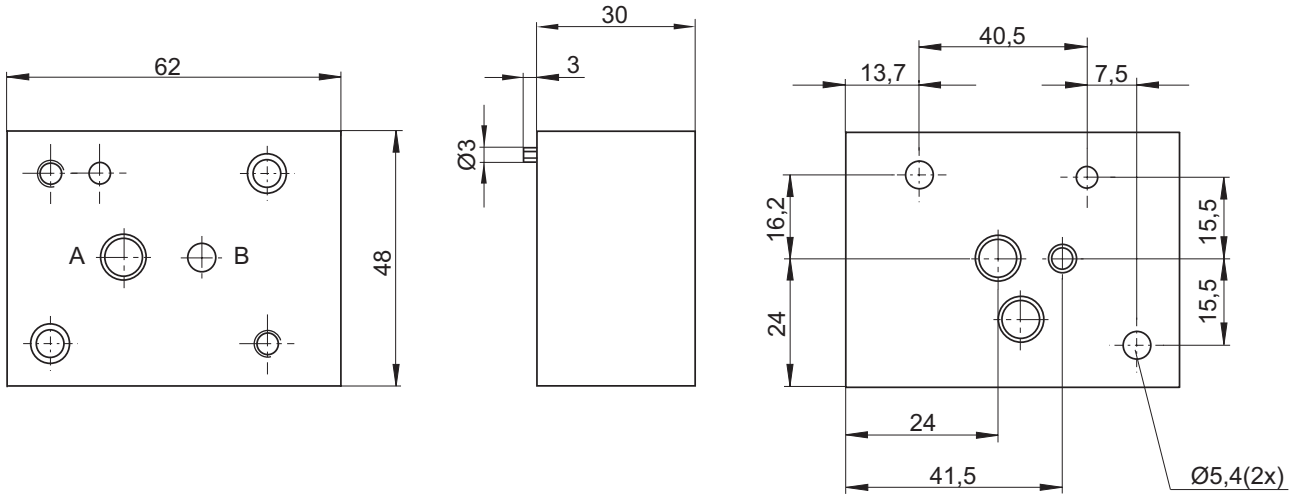
Hydraulic	
Operating pressure range	bar 150
Ports A, B	°C -5 bis +80
Hydraulic oil temperature	mm ² /s 10-300
Viscosity range	l/min see characteristic curve
Max. rate of flow	

Characteristic curve for hydraulic oil 35 mm²/s, 50°C

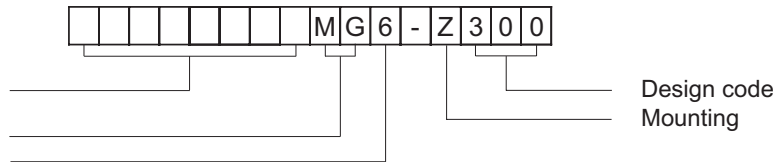


Specifications given herein are subject to alteration

Rectifier NG 6

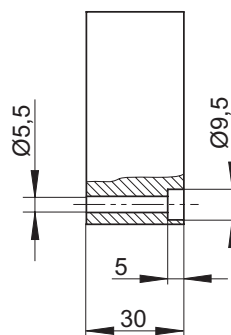
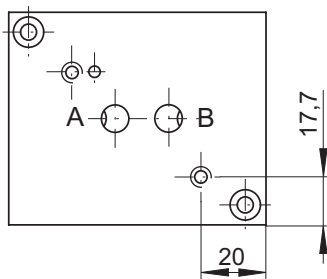


Type code



Port connection pattern

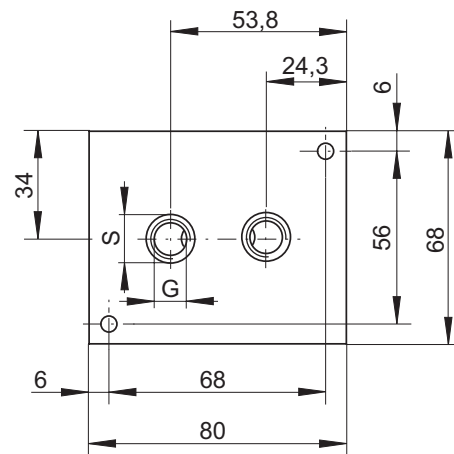
NG 6 for flow control valve
 The figure shows the side of the mounting plate to which the valve is fastened



Single-unit mounting plate

Order number:
 PM6-G1-400
 PM6-G2-400
 PM6-G3-400

G	S
R 1/8"	$\varnothing 15$
R 1/4"	$\varnothing 19$
R 3/8"	$\varnothing 23$



Multiple-unit mounting plates can be supplied on request

Specifications given herein are subject to alteration